



MRP-L39 Polyclonal Antibody

Catalog No	YP-Ab-03990
Isotype	IgG
Reactivity	Human;Rat;Mouse;
Applications	WB;IHC;IF;ELISA
Gene Name	MRPL39
Protein Name	39S ribosomal protein L39 mitochondrial
Immunogen	The antiserum was produced against synthesized peptide derived from human MRPL39. AA range:289-338
Specificity	MRP-L39 Polyclonal Antibody detects endogenous levels of MRP-L39 protein.
Formulation	Liquid in PBS containing 50% glycerol, 0.5% BSA and 0.02% sodium azide.
Source	Polyclonal, Rabbit,IgG
Purification	The antibody was affinity-purified from rabbit antiserum by affinity-chromatography using epitope-specific immunogen.
Dilution	WB: 1/500 - 1/2000. IHC: 1/100 - 1/300. ELISA: 1/40000.. IF 1:50-200
Concentration	1 mg/ml
Purity	≥90%
Storage Stability	-20°C/1 year
Synonyms	MRPL39; C21orf92; MRPL5; RPML5; MSTP003; PRED22; 39S ribosomal protein L39; mitochondrial; L39mt; MRP-L39; 39S ribosomal protein L5, mitochondrial; L5mt; MRP-L5
Observed Band	39kD
Cell Pathway	Mitochondrion .
Tissue Specificity	Isoform 1 is ubiquitously expressed. Isoform 2 is heart-specific.
Function	caution:It is uncertain whether Met-1 or Met-6 is the initiator.,caution:Ref.1 indicates C21orf8 as a synonym for this orf, this is incorrect, C21orf8 is already assigned to another chromosome 21 region.,similarity:To the N-terminal of threonyl-tRNA synthetases.,tissue specificity:Ubiquitous (isoform 1); heart-specific (isoform 2).,
Background	Mammalian mitochondrial ribosomal proteins are encoded by nuclear genes and help in protein synthesis within the mitochondrion. Mitochondrial ribosomes (mitoribosomes) consist of a small 28S subunit and a large 39S subunit. They have an estimated 75% protein to rRNA composition compared to prokaryotic ribosomes, where this ratio is reversed. Another difference between mammalian mitoribosomes and prokaryotic ribosomes is that the latter contain a 5S rRNA. Among different species, the proteins comprising the mitoribosome differ greatly



in sequence, and sometimes in biochemical properties, which prevents easy recognition by sequence homology. This gene encodes a 39S subunit protein. Two transcript variants encoding distinct isoforms have been described. A pseudogene corresponding to this gene is found on chromosome 5q. [provided by RefSeq, Jul 2008],

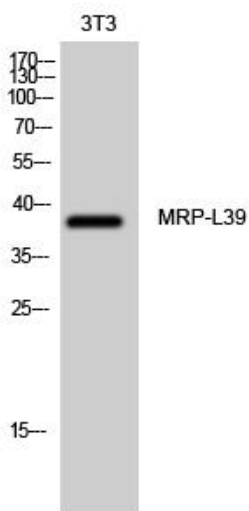
matters needing attention

Avoid repeated freezing and thawing!

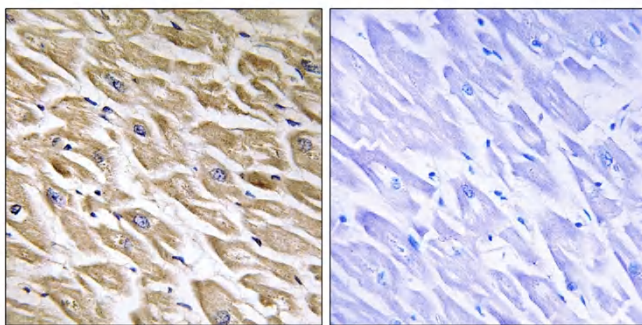
Usage suggestions

This product can be used in immunological reaction related experiments. For more information, please consult technical personnel.

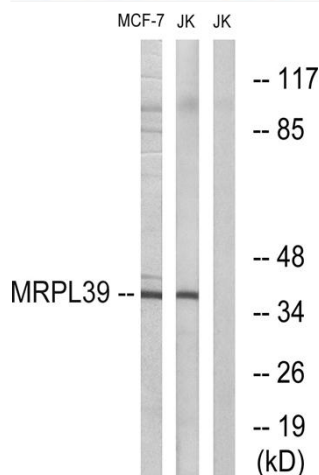
Products Images



Western Blot analysis of 3T3 cells using MRP-L39 Polyclonal Antibody diluted at 1:1000



Immunohistochemistry analysis of paraffin-embedded human heart tissue, using MRPL39 Antibody. The picture on the right is blocked with the synthesized peptide.



Western blot analysis of lysates from Jurkat and MCF-7 cells, using MRPL39 Antibody. The lane on the right is blocked with the synthesized peptide.